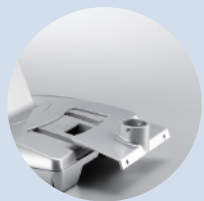


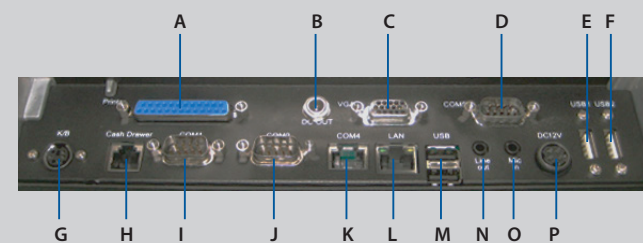
RP-3500B

The RP-3500B, a fanless touch screen POS system, is suitable for any hospitality and specialty retail environments. The touch screen allows easy interactivity for users and delivers accurate input. Its low-voltage and low-power consumption processor gives way for 24/7 operation. Integrated with plug-in/out design, this sleek POS system's slide-in devices can be easily removed and is easy to maintain.



- Front bezel IP65 for IR Version
- Fanless POS system that fulfills all business needs, especially targets on the business that operate under harsh environments and require maximum reliability
- Delivers outstanding performance and enhance business functionality for any hospitality and specialty retail environments
- Constructed from aluminum die-casting, with the integration of plexi-glass on the front bezel
- Integrated optional i-Button, MCR, RFID or Fingerprint for device identification

I/O Connector Panel



- A. Parallel Port
- B. DC Out
- C. VGA
- D. COM5
- E. USB
- F. USB
- G. K/B
- H. Cash Drawer
- I. COM1
- J. COM2
- K. COM4
- L. LAN
- M. USB
- N. Audio Out
- O. MIC In
- P. Power In

Specifications

Model	RP-3512B	RP-3515B
Processor	Intel ULV Celeron-M 1GHz with 0K L2 (Up to Celeron-M 1.5GHz)	
Memory	256MB standard, maximum 1GB (1 x 200-pin DDR SDRAM SO-DIMM)	
Touch LCD Display		
Size / Resolution	12" TFT LCD / 800 x 600	15" TFT LCD / 1024 x 768
Brightness	400 cd/m ²	250 / 350 cd/m ²
Touch Screen	5 / 4 wire Resistive	5 / 4 wire Resistive / IR
I/O Connectivity		
Serial Port	• 4 x External : COM1, COM2 & COM5 (DB9), COM4 (RJ45) • 2 x Internal : COM3 for Primary Touchscreen	
Parallel Port	1 x Bi-directional Parallel port	
USB Port	6 x USB 2.0 (4 x external, 2 x internal)	
Cash Drawer Port	1 x 12V RJ11 (single/dual)	
PS/2	1 x Keyboard	
LAN Port	1 x RJ45 10/100 Base-T	
Video Port	1 x VGA	
Audio Port	1 x Line-out, 1 x Mic-in	
Storage Device	1 x 2.5" SATA HDD 1 x CF Card (optional)	
Speaker	Integrated 2+2 W stereo speakers (Optional)	
DC Output	1 x 12V for 2nd display	
Power Supply	150W External Power Adaptor	
Construction	Aluminum Die-casting Housing, Plexi-Glass Acrylic (front bezel)	
Housing Color	Black/ Silver	
O/S Supported	Windows XP, XPE, WEPOS, Fedora, SuSE Linux	
Dimensions (W x H x D)	320 x 345 x 300 mm	370 x 389 x 300 mm
EMI/Safety	CE, FCC	
Operating Temperature	0°C ~ 40°C	
Optional Peripherals		
Magnetic Stripe Card Reader	Integrated MCR single/dual/triple Track	
MCR 2-in-one / MCR 3-in-one	Integrated MCR+i-Button/MCR+RFID/MCR+Fingerprint/MCR+Smartcard+i-Button	

